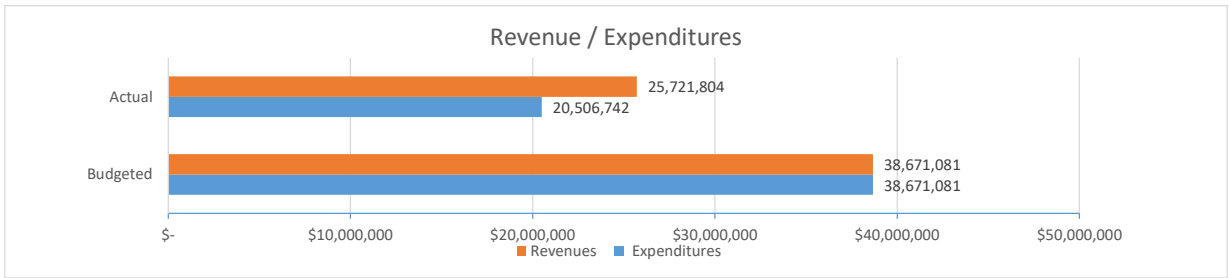
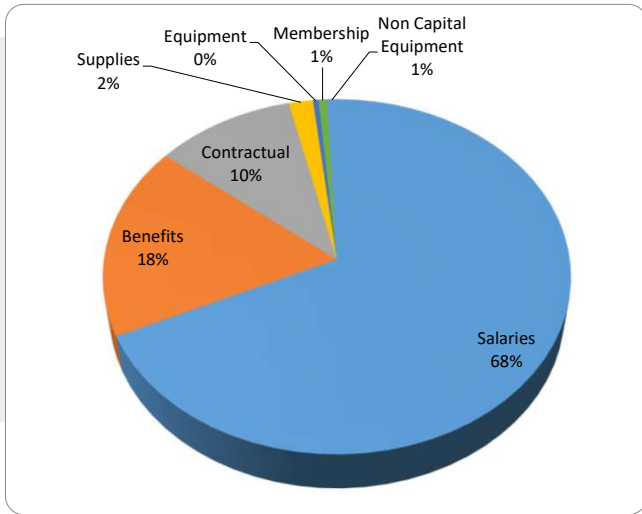


TRUENORTH EDUCATIONAL COOPERATIVE 804
As of February 28, 2023

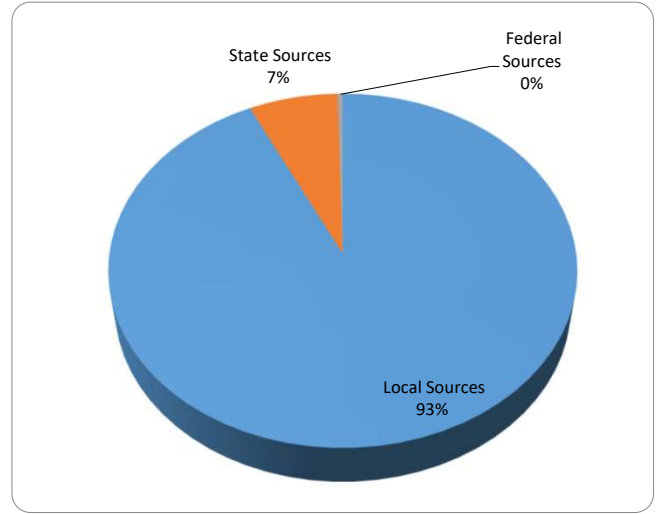


NET: \$ 5,215,061.86

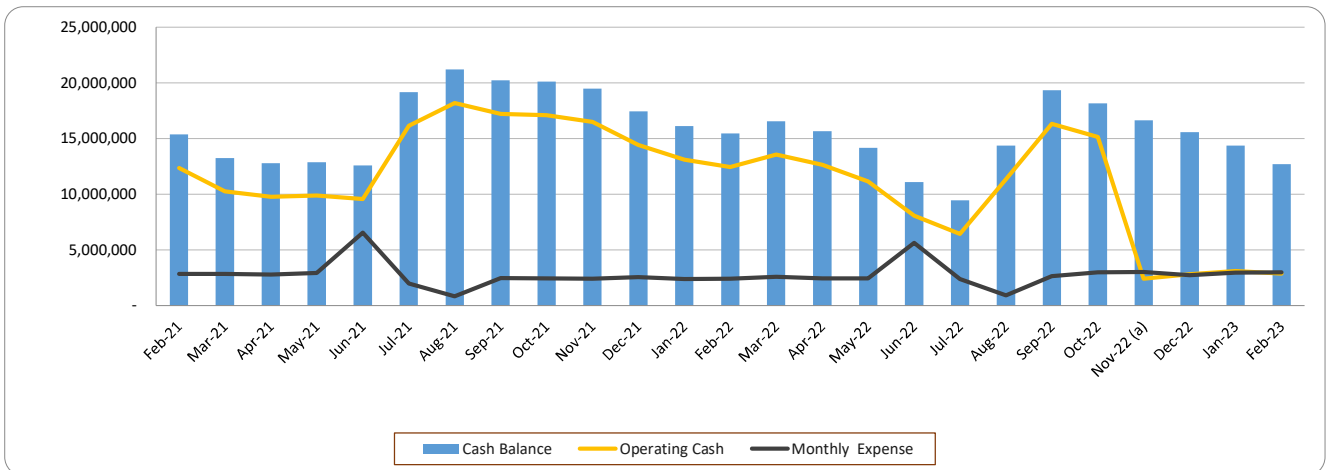
Actual Expenditures



Actual Revenue



Cash Balance History



(a) Truenorth Educational Cooperative 804 implemented an investment strategy to increase interest income. Operating cash is maintained at closer to the cooperative's immediate cash requirements. Investments scheduled to mature in alignment with future anticipated cash needs.